


VAST 2 vs. VAST Security Station (VSS) Comparison Chart

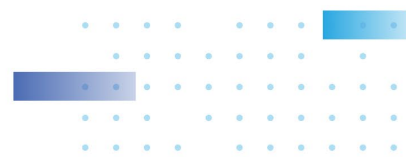
Product Name					
	VAST 2	VSS Lite	VSS Standard	VSS Professional	
Product Overview	VIVOTEK legacy VMS for a wide range of installations	Free entry-level VMS for basic surveillance needs	Cost-effective solution for small and mid-size business	Designed for mid-size to large-scale projects requiring central management and 24/7 operations	
Deployment					
Maximum Number of Cameras Per Server ¹	256	32	128	320	
Maximum Number of Substations Per System	200 (ND/NV series NVR, VAST 2 NR series NVR, VAST 2 Station)	0	32 ² (ND/NV series NVR)	700 (ND/NV series NVR, VSS Pro NR series NVR, VSS Professional Station)	
Licensing					
Connection	For Camera	Required (32 complimentary licenses for VIVOTEK cameras only)	Included (VIVOTEK cameras only)	Required (8 complimentary licenses included)	Required
License	For Camera under ND/NV Series NVR	Included	-	Included	Required
3 rd Party Integration	Data Magnet	Required	-	Included	Included
	TCP Message	Required	-	Included	Included
Network Audio Integration		Required	-	Included	Included
Failover	Substation	Required	-	-	Included
	CMS	Required	-	-	Included
Transportation Integration	GIS/GPS	Required	-	-	Included
Transaction Integration	POS ³	Required	-	-	-
Platform⁴					
Server	Windows	•	•	•	•
	Virtual Machine	-	-	-	•
Client	Windows	•	•	•	•
	macOS	•	•	•	•
Mobile APP	iViewer (iOS/Android)	iViewer (iOS/Android)	iViewer (iOS/Android)	iViewer (iOS/Android)	iViewer (iOS/Android)
Key Feature					
Live View	•	•	•	•	•

¹ Please refer to the system requirement when designing your surveillance deployments.

² The number of substations per system is limited by the maximum number of cameras per system.

³ VSS only supports POS integration via Data Magnet.

⁴ Please refer to the datasheets of VAST 2 and VAST Security Station (VSS) for supported operating systems.



Recording	•	•	•	•
Playback	•	•	•	•
Export	•	•	•	•
Backup	•	•	•	•
Event	•	•	•	•
Dashboard	•	•	•	•
Alarm	•	-	•	•
E-map	•	-	•	•
Counting Report	•	-	•	•
Video Wall (Matrix)	•	-	-	•
Video Mask	-	-	-	•
Video Encryption				
Digital Watermark	•	•	•	•
Exported Video Encryption	• (AES-256 CTR)	• (AES-256 CTR)	• (AES-256 CTR)	• (AES-256 CTR)
Recording Encryption	-	-	-	• (AES-256 CTR)
Search				
Bookmark Search	•	•	•	•
Event Search	•	•	•	•
Log Search	•	•	•	•
Thumbnail Search	•	•	•	•
Alarm Search	•	-	•	•
Smart Search	•	-	•	•
Deep Search ⁵	Object Search	-	-	•
	Attribute Search	-	-	•
	Scene Search	-	-	•
	Re-Search ⁶	-	-	•
User Management				
User Role	Administrator	•	•	•
	Customizable	•	•	•
	User Pre-defined	-	-	•
Device Compatibility⁷				
Camera ⁸	VIVOTEK 8000/9000 series	VIVOTEK 8000/9000 series	VIVOTEK 8000/9000 series	VIVOTEK 8000/9000 series
Substation	VIVOTEK ND/NV series NVR, VAST 2 NR series NVR, VAST 2 Station	-	VIVOTEK ND/NV 9000 series NVR	VIVOTEK ND/NV 9000 series NVR, VSS Pro NR series NVR, VSS Professional Station
Joystick	•	-	•	•
Network Audio Device	•	-	•	•

⁵ Please note that (1) The number of cameras a server can search is limited by your system capability; (2) The supported Deep Search features may vary depending on the specifications of camera models and ND/NV series NVRs. Please refer to <https://www.vivotek.com/ai-driven/deep-search-system-requirement>; (3) An object can generate approximately 0.25 MB of data. For mid-to-high activity scenes, such as parking lots, with about 10 objects per minutes, the data capacity can take up approximately 150 MB of storage space per hour per camera.

⁶ Please note that (1) The CPU and disk performance will influence the search speed; (2) a broader search time frame and more selected cameras require a longer search time and may reach a 90-second timeout.

⁷ Please refer to the datasheets of VAST 2 and VAST Security Station (VSS) for supported brands and models.

⁸ For supported camera models, please refer to https://www.vivotek.com/device_pack#supported_models.



Wiegand Converter	•	-	•	•
I/O Box	•	-	•	•
Access Control	•	-	•	•
POS	•	-	•	•
Camera Integration				
Video Source	VIVOTEK, ONVIF, RTSP	VIVOTEK	VIVOTEK, ONVIF, RTSP	VIVOTEK, ONVIF, RTSP
NVR Integration				
Add NVR	Auto Scan	•	-	•
	Manual	•	-	•
	From VIVOCLOUD	•	-	•
Camera Settings ⁹	-	-	•	•

⁹ This feature is only compatible with ND 9000 Series NVRs with firmware version 4.3 or above.

